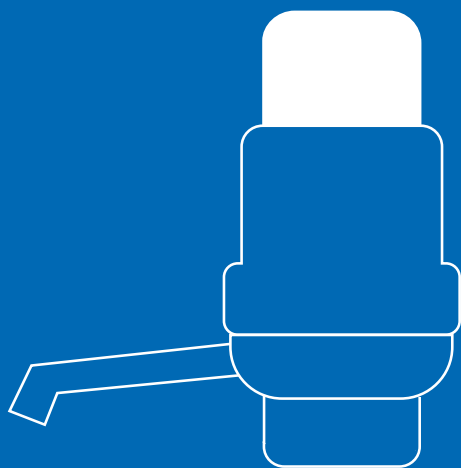


Culligan™



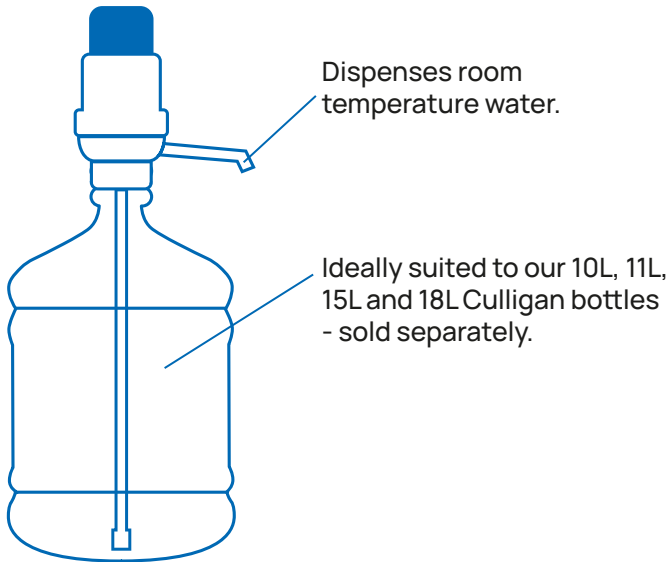
**MANUAL
WATER PUMP**

Dispensador de agua portátil

Portable Water Pump

#900179 SWP-11

FEATURES



WARNINGS & SAFETY PRECAUTIONS

To reduce risk of injury and property damage, user must read this entire guide before assembling, installing & operating pump.

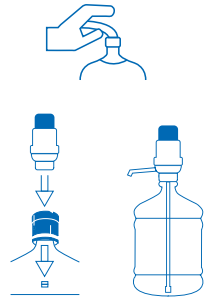
Failure to execute the instructions in this manual can cause personal injury or property damage.

When operating this pump, always exercise basic safety precautions, including the following:

- Prior to use, this pump must be properly assembled and installed in accordance with this manual.
- This pump is intended for water dispensing only. Do NOT use other liquids. Do NOT use for other purposes. Never use any liquid in the dispenser other than known and microbiologically safe bottled water.
- Do NOT operate pump in the presence of explosive fumes.

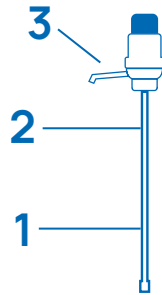
PREPARE BOTTLE

1. Grab a 10L, 11L, 15L or 18L Culligan bottle. Remove the protective sticker from the cap of your Culligan bottle.
2. Pierce the cap with the plastic tube of the pump dispenser body.
3. Remove the body of the pump from the bottle and keep the pierced bottle aside.



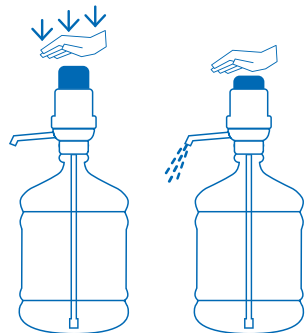
ASSEMBLE PUMP

1. Gently clean the three tubes with damp cloth, mild dishwashing soap and water
2. Assemble tubes by connecting sections to desired length.
3. Attach assembled tubes to bottom of pump.
4. Attach spout to pump.
5. Insert assembled pump into bottle.
6. Turn collar to secure pump to bottle.



OPERATING INSTRUCTIONS

1. Place cup, glass, or pitcher under spout.
2. Press down on top of pump several times to make water flow.



CLEANING AND CARE

1. Clean pump with a cloth, mild dishwashing soap and water.
2. Tubes and spouts are dishwasher safe.
3. Store disassembled in a clean, dry location.

Imported by:
Culligan Company
Av Diagonal 371, 08008 Barcelona, Spain

Made in China

EN Scan this QR code to access the user manual in other languages:

DE Scannen Sie diesen QR-Code, um das Benutzerhandbuch in anderen Sprachen aufzurufen:

FI Skanna tämä QR-koodi päästäksesi käyttöoppaaseen muilla kielillä:

LT Nuskaitykite šį QR kodą, kad pasiektumėte vartotojo vadovą kitomis kalbomis:

NL Scan deze QR-code om toegang te krijgen tot de gebruikershandleiding in andere talen:

PT Leia este código QR para aceder ao manual do utilizador noutras línguas:

ES Lea este código QR para acceder al manual del usuario en otros idiomas:

PL Zeskanuj ten kod QR, aby uzyskać dostęp do instrukcji obsługi w innych językach:

FR Scannez ce code QR pour accéder au manuel d'utilisation dans d'autres langues:

NO Skann denne QR-koden for å få tilgang til brukerhåndboken på andre språk:

EE Skannige see QR-kood, et pääseda juurde teistes keeltes olevale kasutusjuhendile:

SE Skanna den här QR-koden för att komma åt användarmanualen på andra språk:

DK Scan denne QR-kode for at få adgang til brugervejledningen på andre sprog:

LV Noskenējiet šo QR kodu, lai piekļūtu lietotāja rokasgrāmatai citās valodās:

IT Scansionare il codice QR per per accedere al manuale d'uso in altre lingue:

CZ Naskenováním tohoto QR kódu získáte přístup k uživatelské příručce v dalších jazycích:

HU Szkenelje be ezt a QR-kódot a más nyelvű felhasználói kézikönyv eléréséhez:



PROTECT THE ENVIRONMENT
Recycle responsibly.

*Culligan*TM